

**TM 315-50**

Product information

Drum motors

**TM 315-50**



*Van der Graaf*  
Power Transmission Equipment

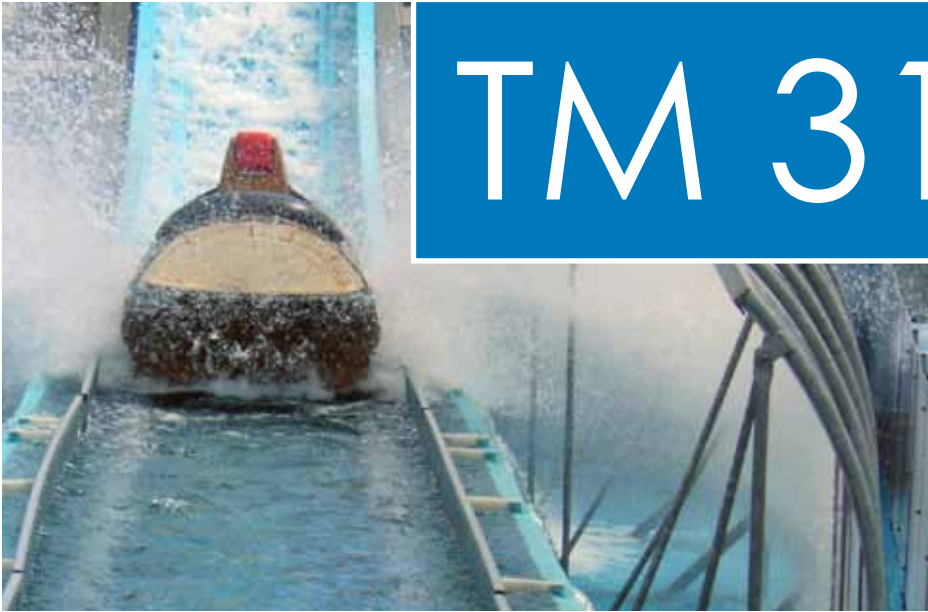
[www.vandergraafpte.nl](http://www.vandergraafpte.nl)

# The TM 315's



playground





# TM 315-50

## A wide range of applications

Van der Graaf has achieved a prominent position on both the domestic and international market with its "GV" Drummotors.

The "GV" Drummotor has found success in a wide range of applications including the following: automotive, X-ray, construction, postal, courier, mining, aggregate, airline baggage, package flow, tyre manufacturing, fish processing, poultry processing, meat processing, agriculture, fruit and vegetable, farming, forestry, baking, dairy and many more.

- 4 Introduction
- 5 Selection table
- 6 Selection table Dahlander motors
- 7 Dimensions Drummotors mild steel
- 8 Dimensions Drummotors stainless steel
- 9 Dimensions Taildrums mild steel
- 10 Dimensions Taildrums stainless steel
- 11 Dimensions bracket
- 12 Cable exit
- 13 Cross sectional / parts description
- 16 Options
- 19 Product range
- 20 Contact us



## Selection table

| TYPE<br>TM<br>315.50      | Power<br>kW | Beltspeed m/s at 50 Hz                                      |  |                              |                              |              |              |              |              |              |              | Min. L<br>mm<br>Design<br>A | Min. L<br>mm<br>Design<br>B | Full load<br>curr.<br>400 V -<br>50 Hz<br>I = ... A | Weight<br>kg<br>L=600 |
|---------------------------|-------------|---|--|------------------------------|------------------------------|--------------|--------------|--------------|--------------|--------------|--------------|-----------------------------|-----------------------------|---|-----------------------|
|                           |             | Beltpull N  |  |                              |                              |              |              |              |              |              |              |                             |                             |   |                       |
| 215<br>215 Z<br>215 ZV    | 11,0        | 4,40<br>2375<br>2,80<br>3730<br>1,90<br>5500                | 3,80<br>2750<br>2,50<br>4180<br>1,60<br>6530 | 3,40<br>3075<br>2,40<br>4355 | 3,00<br>3485<br>2,20<br>4750 |              |              |              |              |              |              | 600                         | 650                         | 19,7  | 178                   |
| 410<br>410 ZV             | 7,5         | 4,10<br>1740<br>1,40<br>5090                                | 3,40<br>2095<br>1,25<br>5700                 | 3,00<br>2375<br>1,20<br>5940 | 2,40<br>2970<br>1,10<br>6475 | 2,20<br>3240 | 1,90<br>3750 | 1,70<br>4190 | 1,50<br>4750 |              |              | 600                         | 650                         | 15,0  | 178                   |
| 475<br>475 Z<br>475 ZV    | 5,5         | 4,10<br>1275<br>1,40<br>3730<br>0,95<br>5500                | 3,40<br>1535<br>1,25<br>4180<br>0,80<br>6530 | 3,00<br>1740<br>1,20<br>4355 | 2,40<br>2175<br>1,10<br>4750 | 2,20<br>2375 | 1,90<br>2750 | 1,70<br>3075 | 1,50<br>3485 |              |              | 550                         | 600                         | 10,5  | 173                   |
| 455<br>455 Z<br>455 ZV    | 4,0         | 4,10<br>925<br>1,10<br>3455<br>0,80<br>4750<br>0,70<br>5430 | 3,40<br>1120<br>0,90<br>4220                 | 3,00<br>1265                 | 2,40<br>1585                 | 2,30<br>1650 | 1,90<br>2000 | 1,70<br>2235 | 1,50<br>2535 | 1,40<br>2715 | 1,20<br>3165 | 500                         | 550                         | 7,8   | 168                   |
| 440<br>440 Z<br>440 ZV    | 3,0         | 2,30<br>1240<br>0,70<br>4070<br>0,55<br>5180                | 1,90<br>1500<br>0,60<br>4750<br>0,50<br>5700 | 1,70<br>1675                 | 1,50<br>1900                 | 1,40<br>2035 | 1,20<br>2375 | 1,10<br>2590 | 0,90<br>3165 | 0,80<br>3565 |              | 500                         | 550                         | 6,6   | 168                   |
| 640<br>640 ZV             | 3,0         | 2,70<br>1055<br>0,45<br>6335                                | 1,60<br>1780<br>0,40<br>7125                 |                              |                              |              |              |              |              |              |              | 500                         | 550                         | 7,1   | 168                   |
| 630<br>630 Z<br>630 ZV    | 2,2         | 1,50<br>1395<br>0,45<br>4645<br>0,40<br>5225                | 1,20<br>1740<br>0,38<br>5500                 | 1,10<br>1900                 | 0,90<br>2320                 | 0,80<br>2615 | 0,70<br>2985 | 0,60<br>3485 | 0,50<br>4180 |              |              | 500                         | 550                         | 4,9   | 168                   |
| 820<br>820 Z<br>820 ZV    | 1,5         | 1,10<br>1295<br>0,37<br>3850<br>0,25<br>5700                | 0,90<br>1585<br>0,32<br>4455                 | 0,85<br>1675<br>0,29<br>4915 | 0,65<br>2190                 | 0,60<br>2375 | 0,55<br>2590 | 0,45<br>3165 | 0,40<br>3565 |              |              | 500                         | 550                         | 4,6   | 168                   |
| 1220<br>1220 Z            | 1,5         | 0,70<br>2035<br>0,24<br>5940                                | 0,35<br>4070<br>0,21<br>6785                 |                              |                              |              |              |              |              |              |              | 550                         | 600                         | 5,8   | 173                   |
| 815<br>815 Z              | 1,1         | 1,10<br>950<br>0,37<br>2825                                 | 0,90<br>1160<br>0,32<br>3265                 | 0,85<br>1230<br>0,29<br>3605 | 0,65<br>1610<br>0,25<br>4180 | 0,60<br>1740 | 0,55<br>1900 | 0,45<br>2320 | 0,40<br>2615 |              |              | 500                         | 550                         | 3,3   | 168                   |
| 1215<br>1215 Z<br>1215 ZV | 1,1         | 0,70<br>1495<br>0,24<br>4355<br>0,19<br>5500                | 0,35<br>2985                                 |                              |                              |              |              |              |              |              |              | 500                         | 550                         | 5,9   | 168                   |

Available standard facewidth's: 500 - 550 - 600 - 650 - 700 - 750 - 800 - 850 - 900 - 950 - 1000 - 1050 - 1100 - 1150 mm

When an electro-mechanical brake is fitted, the minimum facewidth is increased by 150 mm

When a backstop is fitted in a 2-pole drum motor, the minimum facewidth is increased by 50 mm

The total weight of a Drummotor grows approx. 7 kg per 100 mm

Available torque: (Beltpull N x drum diameter m) / 2 Nm

## Selection table Dahlander motors

| TYPE<br>TM<br>315.50               | Power<br>kW | Beltspeed m/s at 50 Hz   |  |   |  |                               | Min. L<br>mm<br>Design<br>A   | Min. L<br>mm<br>Design<br>B   | Full load<br>curr.<br>400 V -<br>50 Hz<br>I = ... A | Weight<br>kg<br>L=600 |     |          |     |
|------------------------------------|-------------|--|--|---|--|-------------------------------|-------------------------------|-------------------------------|---|-----------------------|-----|----------|-----|
|                                    |             | Beltpull N   |  |   |  |                               |                               |                               |   |                       |     |          |     |
| 470/210<br>470/210 Z<br>470/210 ZV | 5,0/7,5     | <b>2,40/4,80</b><br>1980/1485<br><b>1,30/2,60</b><br>3655/2740<br><b>0,95/1,90</b><br>5000/3750                                | <b>2,20/4,40</b><br>2160/1620<br><b>1,25/2,50</b><br>3800/2850<br><b>0,80/1,60</b><br>5940/4455                                | <b>1,90/3,80</b><br>2500/1875<br><b>1,20/2,40</b><br>3960/2970                                  | <b>1,70/3,40</b><br>2795/2095<br><b>1,10/2,20</b><br>4320/3240 | <b>1,50/3,00</b><br>3165/2375 | 600                           | 650                           | 10,6/15,2   | 178                   |     |          |     |
| 455/275<br>455/275 Z<br>455/275 ZV | 4,0/5,5     | <b>2,40/4,80</b><br>1585/1090<br><b>1,10/2,20</b><br>3455/2375<br><b>0,80/1,60</b><br>4750/3265                                | <b>2,20/4,40</b><br>1725/1190<br><b>0,90/1,80</b><br>4220/2905   | <b>1,90/3,80</b><br>2000/1375   | <b>1,80/3,60</b><br>2110/1450                                  | <b>1,70/3,40</b><br>2235/1535 | <b>1,50/3,00</b><br>2535/1740 | <b>1,40/2,80</b><br>2715/1865 | <b>1,20/2,40</b><br>3165/2175                       | 550                   | 600 | 7,8/10,9 | 173 |
| 440/255<br>440/255 Z<br>440/255 ZV | 3,0/4,0     | <b>2,20/4,40</b><br>1295/865<br><b>0,80/1,60</b><br>3565/2375  | <b>1,80/3,60</b><br>1585/1055<br><b>0,65/1,30</b><br>4070/2715<br><b>0,55/1,10</b><br>5180/3455                                | <b>1,70/3,40</b><br>1675/1120<br><b>0,60/1,20</b><br>4385/2925<br><b>0,50/1,00</b><br>5700/3800 | <b>1,50/3,00</b><br>1900/1265                                  | <b>1,40/2,80</b><br>2035/1355 | <b>1,20/2,40</b><br>2375/1585 | <b>1,10/2,20</b><br>2590/1725 | <b>0,90/1,80</b><br>3165/2110                       | 500                   | 550 | 5,8/7,1  | 168 |
| 830/440<br>830/440 ZV              | 2,2/3,0     | <b>1,10/2,20</b><br>1900/1295<br><b>0,40/0,80</b><br>5225/3565   | <b>0,90/1,80</b><br>2320/1585<br><b>0,35/0,70</b><br>5970/4070   | <b>0,85/1,70</b><br>2460/1675<br><b>0,32/0,64</b><br>6530/4455                                  | <b>0,75/1,50</b><br>2785/1900<br><b>0,30/0,60</b><br>6965/4750 | <b>0,70/1,40</b><br>2985/2035 | <b>0,60/1,20</b><br>3485/2375 | <b>0,55/1,10</b><br>3800/2590 | <b>0,45/0,90</b><br>4645/3165                       | 550                   | 600 | 7,7/5,9  | 173 |
| 820/430<br>820/430 Z<br>820/430 ZV | 1,5/2,2     | <b>2,05/4,10</b><br>695/510<br><b>0,70/1,40</b><br>2035/1495<br><b>0,35/0,70</b><br>4070/2985<br><b>0,28/0,55</b><br>5180/3800 | <b>1,70/3,40</b><br>840/615<br><b>0,60/1,20</b><br>2375/1740<br><b>0,32/0,64</b><br>4455/3265<br><b>0,25/0,50</b><br>5700/4180 | <b>1,50/3,00</b><br>950/695<br><b>0,55/1,10</b><br>2590/1900<br><b>0,30/0,60</b><br>4750/3485   | <b>1,20/2,40</b><br>1190/870<br><b>0,45/0,90</b><br>3165/2320  | <b>1,10/2,20</b><br>1295/950  | <b>0,90/1,80</b><br>1585/1160 | <b>0,85/1,70</b><br>1675/1230 | <b>0,75/1,50</b><br>1900/1395                       | 500                   | 550 | 5,8/4,7  | 168 |

Available standard facewidth's: 500 - 550 - 600 - 650 - 700 - 750 - 800 - 850 - 900 - 950 - 1000 - 1050 - 1100 - 1150 mm

When an electro-mechanical brake is fitted, the minimum facewidth is increased by 150 mm

When a backstop is fitted in a 2-pole drum motor, the minimum facewidth is increased by 50 mm

The total weight of a Drummotor grows approx. 7 kg per 100 mm

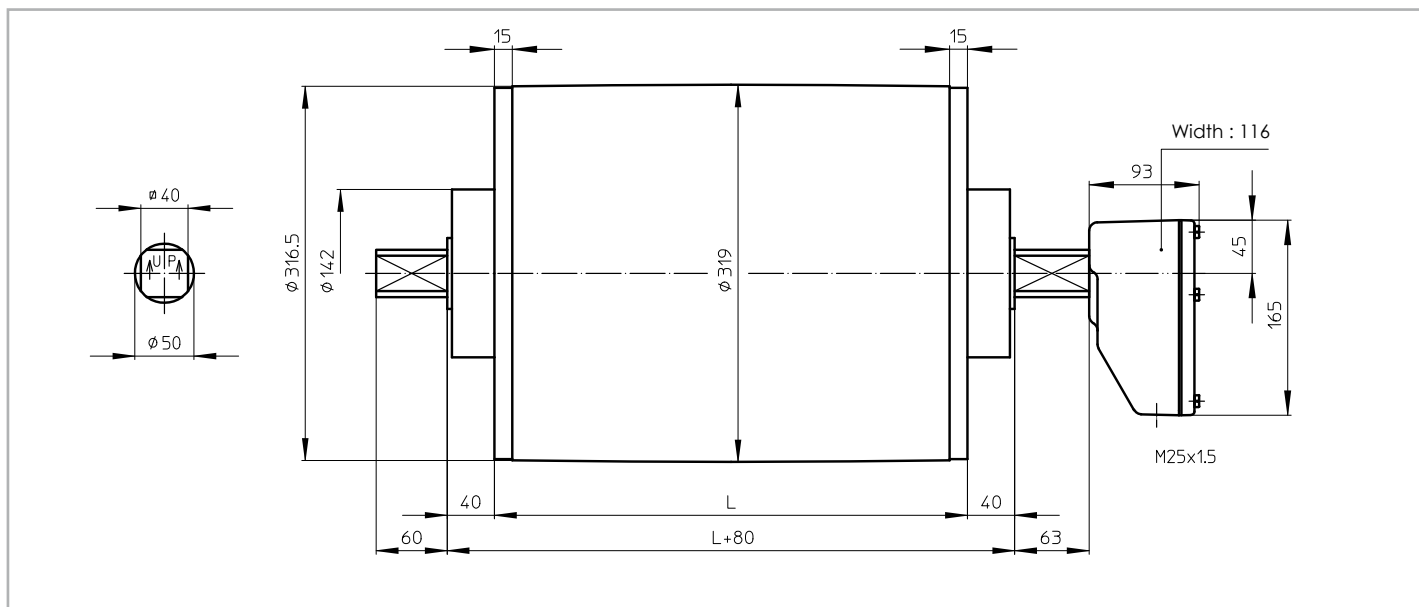
Available torque: (Beltpull N x drum diameter m) / 2 Nm



## Dimensions Drummotors mild steel

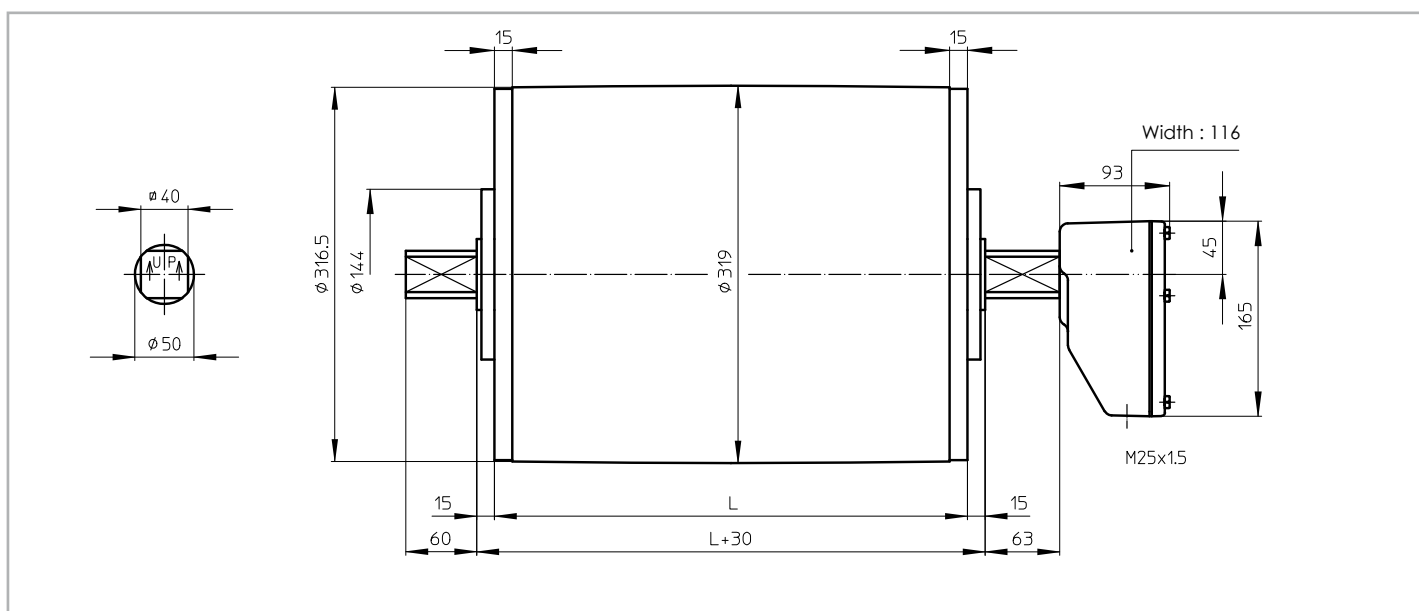
### TM 315A50

TM 315A50, mild steel Drummotor with cast iron junctionbox



### TM 315B50

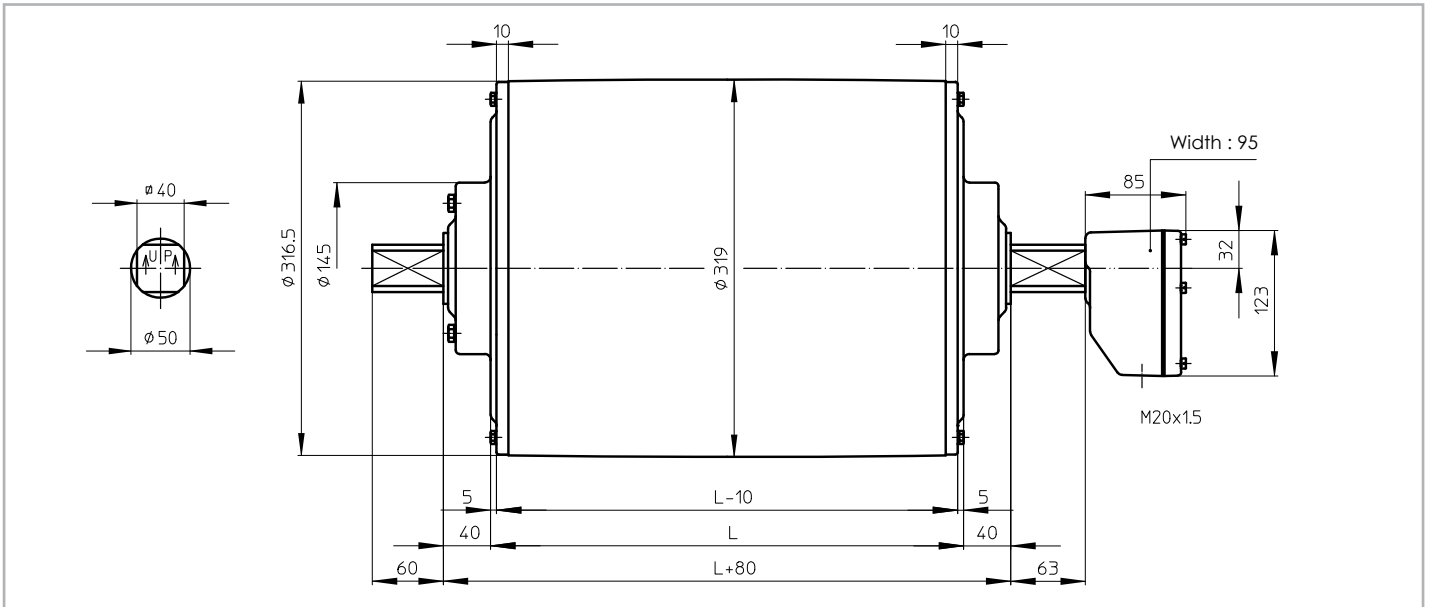
TM 315B50, mild steel Drummotor with cast iron junctionbox



# Dimensions Drummotors stainless steel

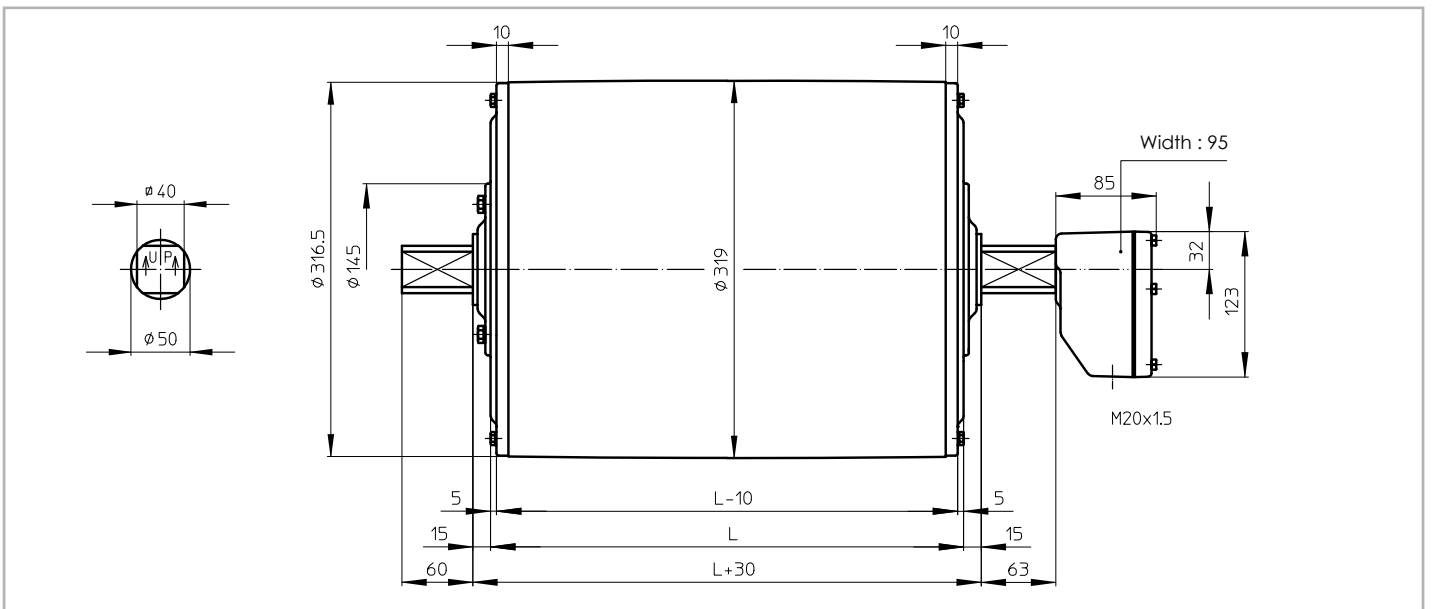
## TM 315A50 CR

TM 315A50 CR, stainless steel Drummotor with polyamide junctionbox and CR sealing



## TM 315B50 CR

TM 315B50 CR, stainless steel Drummotor with polyamide junctionbox and CR sealing

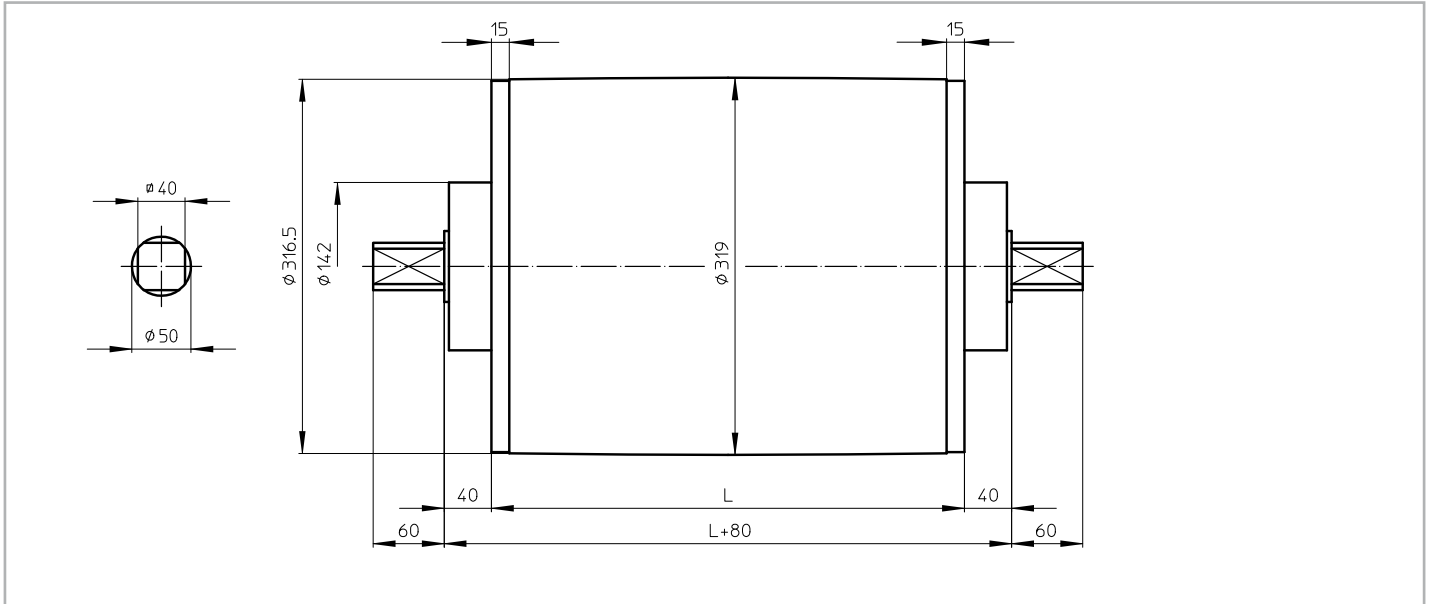




# Dimensions Taildrums mild steel

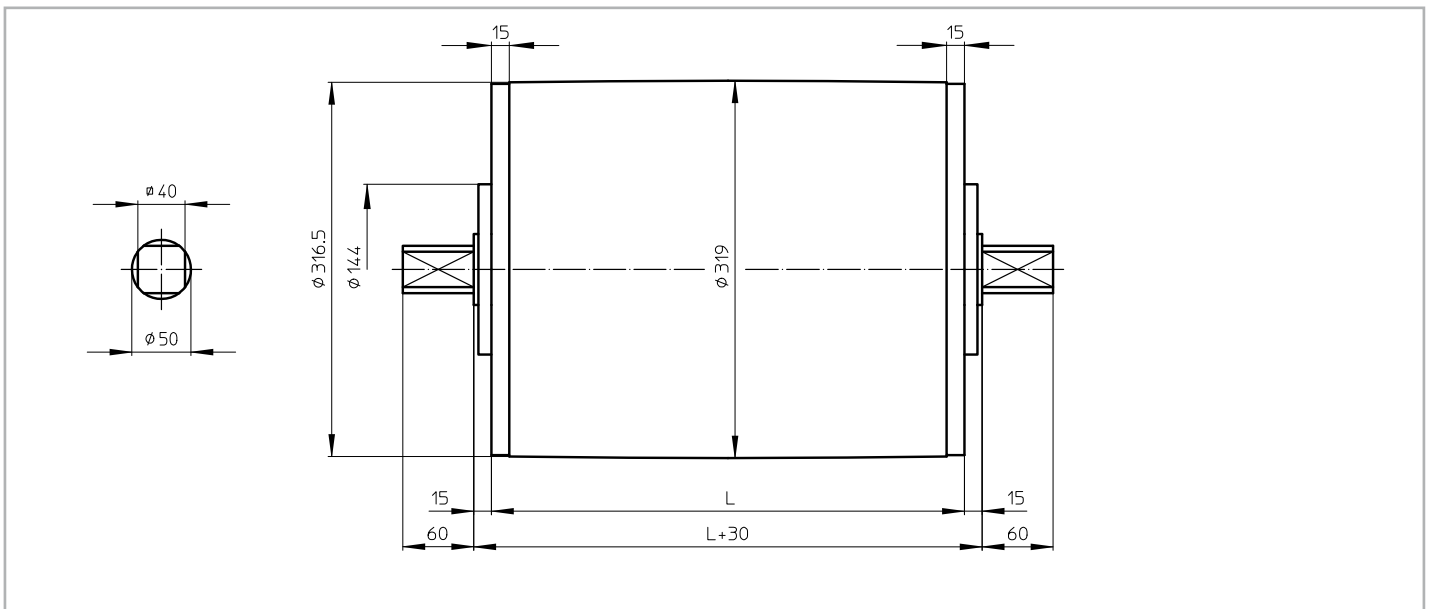
## KT 315A50

KT 315A50, mild steel Taildrum



## KT 315B50

KT 315B50, mild steel Taildrum





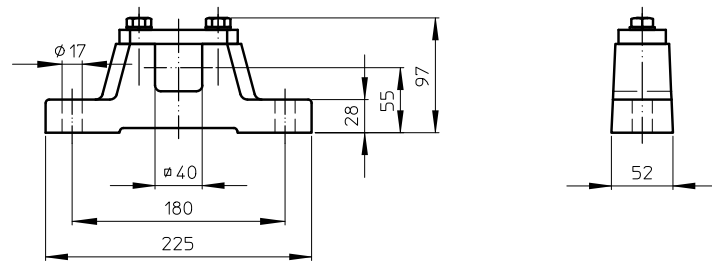


## Dimensions bracket

### AB 50

AB 50, cast iron or stainless steel bracket

Weight: 7,2 kg per pair



# Cable exit

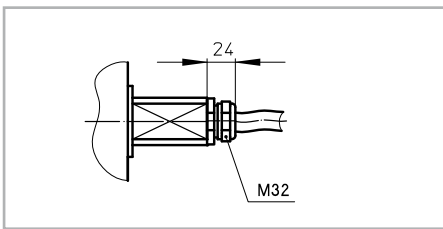
Standard design of a TM 315-50 is with a cast iron junctionbox. For stainless steel design, this can be either a cast iron PU coated cast iron or stainless steel junctionbox.

On request a drum motor can be fitted with a cable. In this case it is important to know the available voltage (preferably 1 voltage), the length of the cable, whether the cable is shielded or not and the type of cable exit.

An overview of available cable exits is shown below.

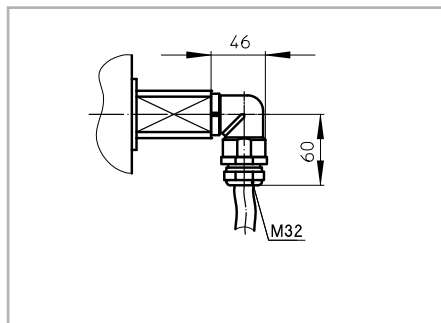
## Option 1

Straight cable exit with cable gland



## Option 3

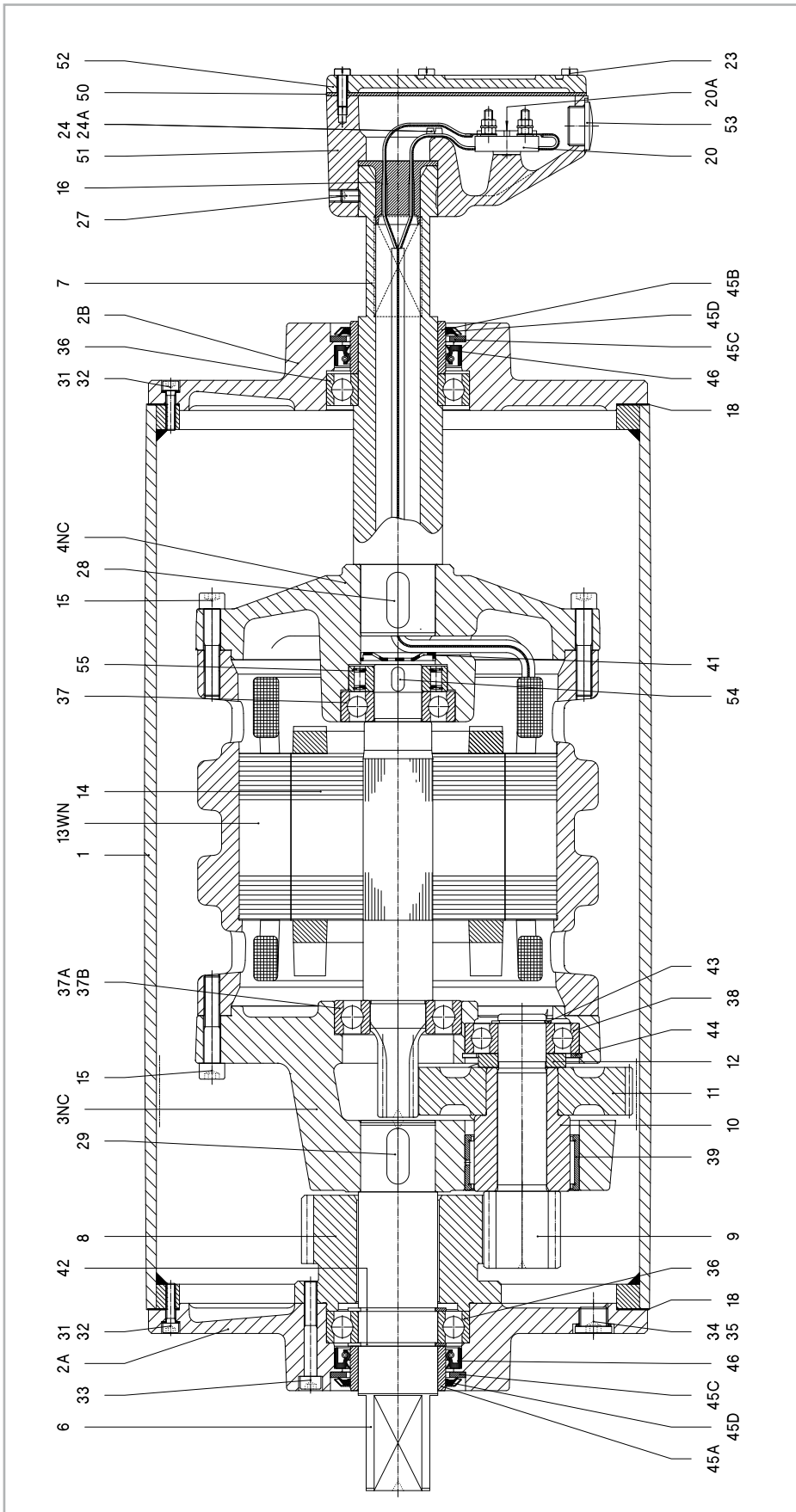
Elbow cable exit with cable gland  
(minimum facewidth increases with 50 mm)





TM 315A50

Legenda



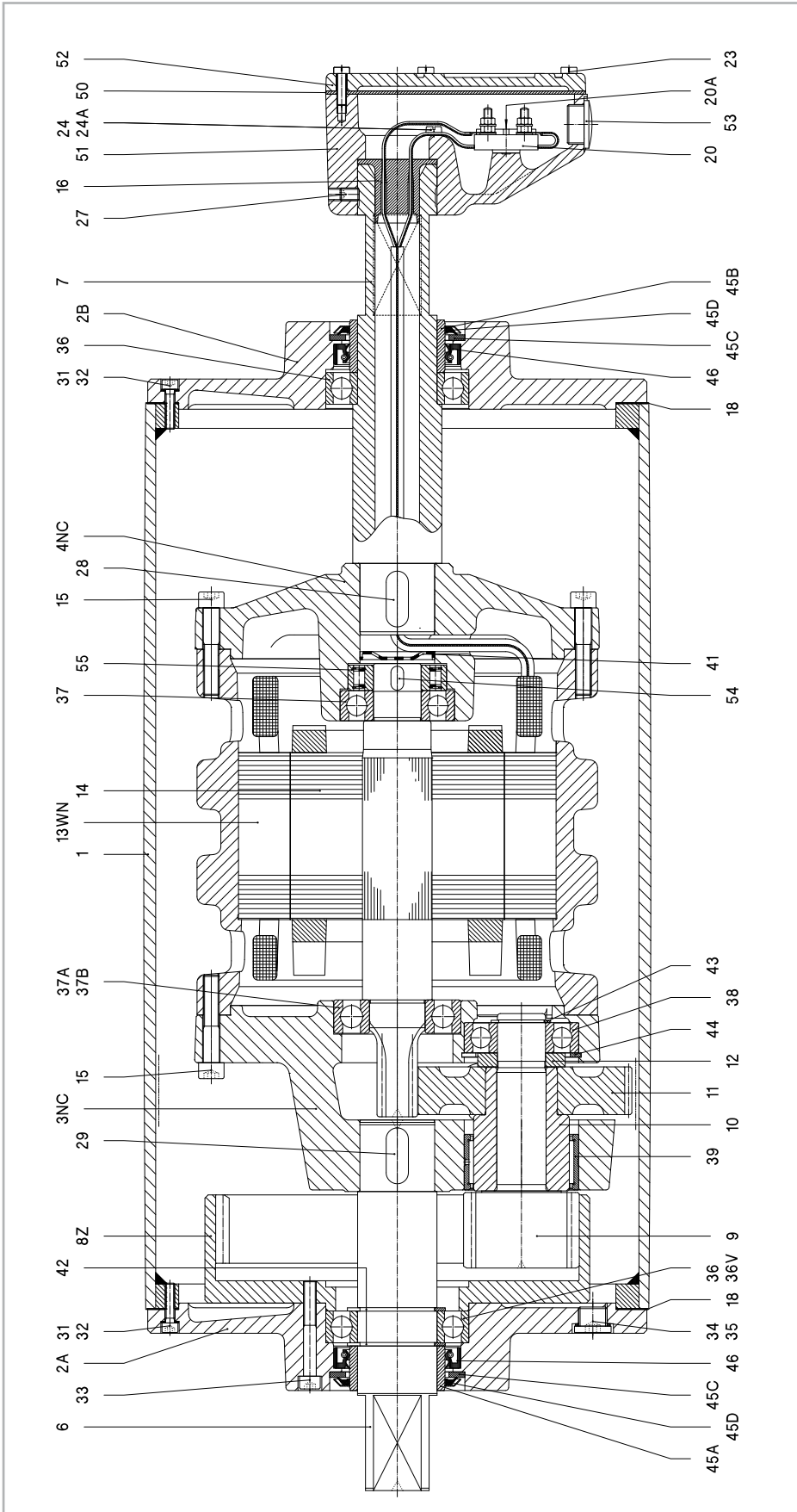
Remark: Drummotor also available in B-design (TM315B50)

|      |                  |      |                     |     |                |     |               |    |                   |
|------|------------------|------|---------------------|-----|----------------|-----|---------------|----|-------------------|
| 1    | Shell            | 13WN | Stator              | 29  | Key            | 39  | Needlebearing | 51 | Junctionbox       |
| 2A   | Endflange        | 14   | Rotor               | 31  | Int. hex screw | 41  | Disc          | 52 | Junctionbox cover |
| 2B   | Endflange        | 15   | Int. hex screw      | 32  | Washer         | 42  | Circlip       | 53 | Stopping plug     |
| 3NC  | Gearhousing      | 16   | Cable passage       | 33  | Int. hex screw | 43  | Circlip       | 54 | Key               |
| 4NC  | Motoflange       | 18   | Gasket              | 34  | Fillerplug     | 44  | Circlip       | 55 | Backstop          |
| 6    | Shaftend         | 20   | Terminalboard       | 35  | Washer         | 45A | Bearing race  | 57 | Dataplate         |
| 7    | Hollow shaft     | 20A  | Cyl. head screw     | 36  | Ballbearing    | 45B | Bearing race  |    |                   |
| 8    | External gear    | 23   | Cyl. head screw     | 37  | Ballbearing    | 45C | Shim plated   |    |                   |
| 9/10 | Pinion with bush | 24   | Cyl. head screw     | 37A | Ballbearing    | 45D | Gammaring     |    |                   |
| 11   | Gear             | 24A  | Toothed lock washer | 37B | Ballbearing    | 46  | Olised        |    |                   |
| 12   | Distance ring    | 27   | Setscrew            | 38  | Ballbearing    | 50  | Seal          |    |                   |

# Cross sectional / parts description

TM 315A50 Z

Legenda

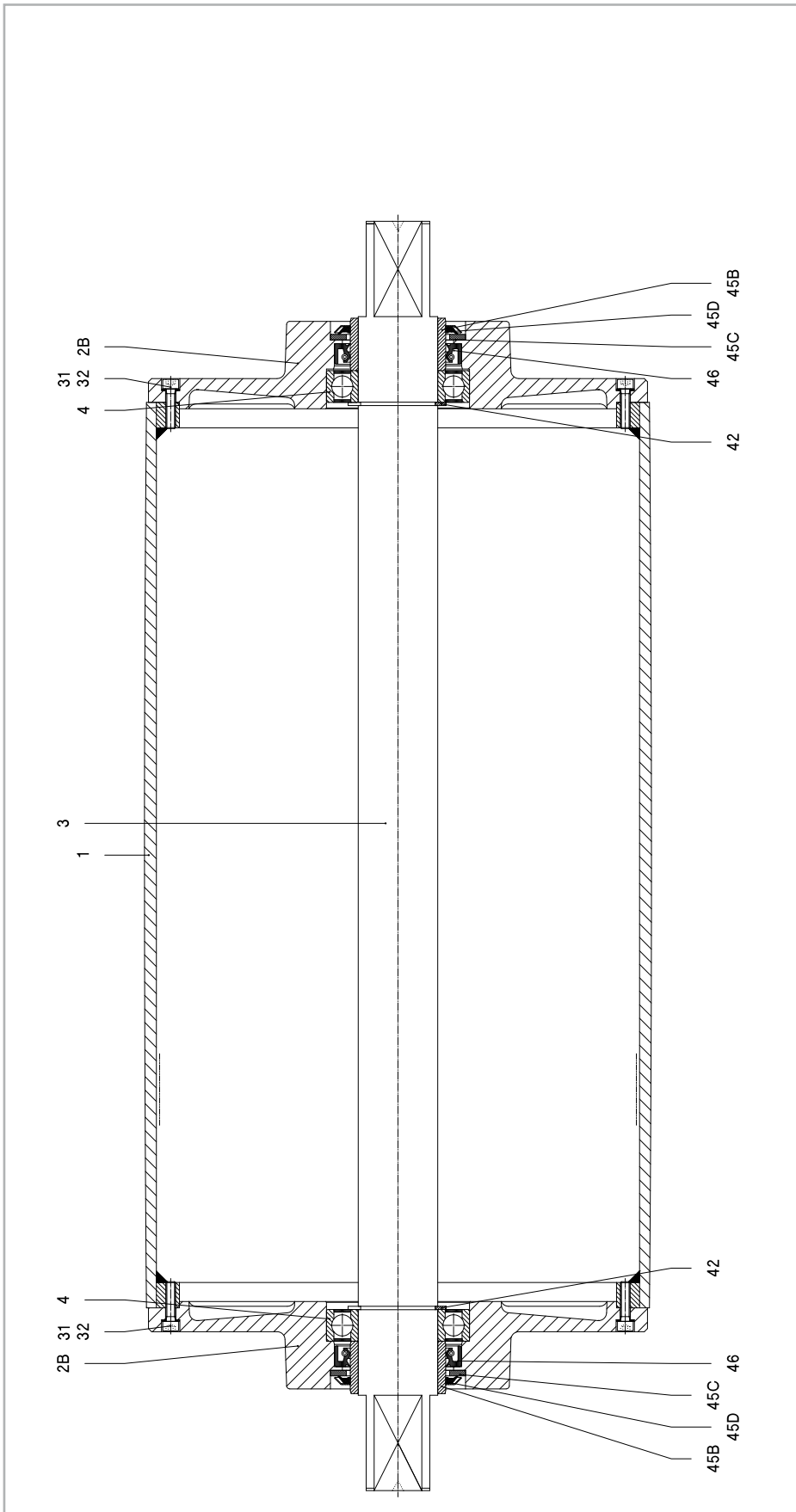


Remark: Drummotor also available in B-design (TM315B50 Z)

|      |                  |      |                     |     |                     |     |               |    |                   |
|------|------------------|------|---------------------|-----|---------------------|-----|---------------|----|-------------------|
| 1    | Shell            | 13WN | Stator              | 29  | Key                 | 38  | Ballbearing   | 50 | Seal              |
| 2A   | Endflange        | 14   | Rotor               | 31  | Int. hex screw      | 39  | Needlebearing | 51 | Junctionbox       |
| 2B   | Endflange        | 15   | Int. hex screw      | 32  | Washer              | 41  | Disc          | 52 | Junctionbox cover |
| 3NC  | Gearhousing      | 16   | Cable passage       | 33  | Int. hex screw      | 42  | Circlip       | 53 | Stopping plug     |
| 4NC  | Motoflange       | 18   | Gasket              | 34  | Fillerplug          | 43  | Circlip       | 54 | Key               |
| 6    | Shaftend         | 20   | Terminalboard       | 35  | Washer              | 44  | Circlip       | 55 | Backstop          |
| 7    | Hollow shaft     | 20A  | Cyl. head screw     | 36  | Ballbearing         | 45A | Bearing race  | 57 | Dataplate         |
| 8Z   | Internal gear    | 23   | Cyl. head screw     | 36V | Cyl. roller bearing | 45B | Bearing race  |    |                   |
| 9/10 | Pinion with bush | 24   | Cyl. head screw     | 37  | Ballbearing         | 45C | Shim plated   |    |                   |
| 11   | Gear             | 24A  | Toothed lock washer | 37A | Ballbearing         | 45D | Gammaring     |    |                   |
| 12   | Distance ring    | 27   | Setscrew            | 37B | Ballbearing         | 46  | Olised        |    |                   |

KT 315A50

Legenda



Remark: Taildrum also available in B-design (KT315B50)

|    |                |     |              |
|----|----------------|-----|--------------|
| 1  | Shell          | 42  | Circlip      |
| 2B | Endflange      | 45B | Bearing race |
| 3  | Shaft          | 45C | Shim plated  |
| 4  | Ballbearing    | 45D | Gammaring    |
| 31 | Int. hex screw | 46  | O-lseal      |
| 32 | Washer         |     |              |

## Material

The external parts of the Drummotor are made from mild steel and cast iron. Depending on the application it is also possible to manufacture in stainless steel (complete or part). You can choose between stainless steel 304 (general food industry) and stainless steel 316 (salt water applications).

## Backstop - Brake

If an inclined belt conveyor is stopped fully loaded, it could run backwards.

To prevent this we can install a backstop. One of the bearings in the Drummotor is replaced by a one way bearing. The way this bearing is installed determines the direction of rotation of the drum. TBRH indicates a cw rotation and TBLH ccw.

In situations where a Drummotor needs to be able to drive in both directions it is not possible to use a backstop. In this case we use a brake. When an declined belt or a horizontal belt needs to be stopped quickly to pick or place items a brake is the best solution.

## Inclined position

Sometimes a Drummotor needs to be installed on an inclined or even vertical position. This is possible, but we need to make adjustments to the oil level in the drum as the oil will flow to the lower side of the Drummotor causing the top bearing to run without lubrication. To prevent problems we will need to know the installation angle so we can fill the drum with extra oil and fit a double sealed bearing on the upper side.

## Thermal protection

A Van der Graaf Drummotor can be fitted with thermal protection. This consists of either a thermistor (PTC) or bi-metal (klixon). We install these on each phase of the electric motor.

## Encoder - Sensor bearing

In certain applications it is required to measure the speed or position of a conveyor belt. For this type of application we can install an encoder or sensor bearing to accurately measure rotational speed of the Drummotor.

The accuracy needed will determine the type of encoder or sensor used.

## Lagging

The power produced by the Drummotor has to be transferred to the belt and lagging is used to give more friction between the Drummotor and the conveyor belt. Van der Graaf can fit your Drummotor with different kinds of lagging.

There is a difference between cold and hot vulcanised lagging. Cold vulcanised means the lagging is glued to the Drummotor usually in sheet form and the join 'welded' together. Hot vulcanising is a process where the shell is wrapped around with thin layers of rubber. The shell with the rubber is then baked in an autoclave fusing the layers together creating a seamless finish.

It is possible to cut grooves (e.g chevron or diamond) in the lagging.

## Sprockets

Do you wish to use a Drummotor to drive modular belts? Van der Graaf can help you! Fitting sprockets suitable for various types of modular belts is a simple solution. The Drummotor is manufactured with a cylindrical shell and machined with a patented 'keying' system. The sprockets are simply 'slid' on and locked securely into position.

## Sealings for mild steel Drummotors

RB sealing - IP 66



This is Van der Graaf's standard sealing. This type of sealing will work in most conditions.

RBS sealing - IP 66



This sealing is specifically designed for those applications where high water pressure is used for cleaning.

HD sealing - IP 66



This sealing is designed for abrasive applications, like sand, gravel and soil.

## Sealings for stainless steel Drummotors

CR sealing - IP 66



This is our standard sealing for stainless steel Drummotors, a very effective, multi labyrinth sealing.

UW sealing - IP 68



This sealing is suitable for under water applications. The maximum depth is approx 2,5 m.

# Options

| Specification                          | Standard          | Optional                                  |
|--|-------------------|---|
| <b>Construction</b>                    |                   |   |
| Shafts and bolts                       | Mild steel        | Stainless steel                           |
| End caps                               | Cast iron         | Stainless steel                           |
| Shell                                  | Mild steel        | Stainless steel                           |
| Junctionbox                            | Cast iron         | PU coated cast iron or stainless steel    |
| Cable                                  |                   | Shielded or non-shielded                  |
| Sealing mild steel                     | RB                | RBS, HD                                   |
| Sealing stainless steel                | CR                | UW  |
| <b>Shell</b>                           |                   |   |
| Crowned                                | •                 |   |
| Cylindrical                            |                   | •   |
| Balanced                               |                   | •   |
| Lagging, cold vulcanised               |                   | •   |
| Lagging, hot vulcanised                |                   | •   |
| Lagging, FDA approved                  |                   | •   |
| Fitted with grooves, patterns          |                   | •   |
| <b>Electro motor</b>                   |                   |   |
| Three-phase asynchronous               | •                 |   |
| Power supply (P < 3 kW)                | 230/400 V - 50 Hz | Other voltages and frequencies on request |
| Power supply (P ≥ 3 kW)                | 400/690 V - 50 Hz | Other voltages and frequencies on request |
| Two speed (Dahlander)                  |                   | •   |
| Insulation class                       | F                 | H   |
| Thermal protection                     |                   | Bi-metal or thermistor                    |
| Run by frequency inverter              | •                 |   |
| <b>Other options</b>                   |                   |   |
| Food grade oil                         |                   | •   |
| Backstop, mechanical                   |                   | •   |
| Brake, electro mechanical              |                   | •   |
| Clutch brake, electro mechanical       |                   | •   |
| Inclined or vertical position          |                   | •   |
| Other facewidth's                      |                   | •   |
| Different shaft designs                |                   | •   |
| Encoder or sensor bearing in Drummotor |                   | •   |
| Encoder or sensor bearing in Taildrum  |                   | •   |
| <b>Certificates</b>                    |                   |   |
| CE                                     | •                 |   |
| UL                                     |                   | •   |
| CSA                                    |                   | •   |
| ATEX zone 22, dust                     |                   | •   |



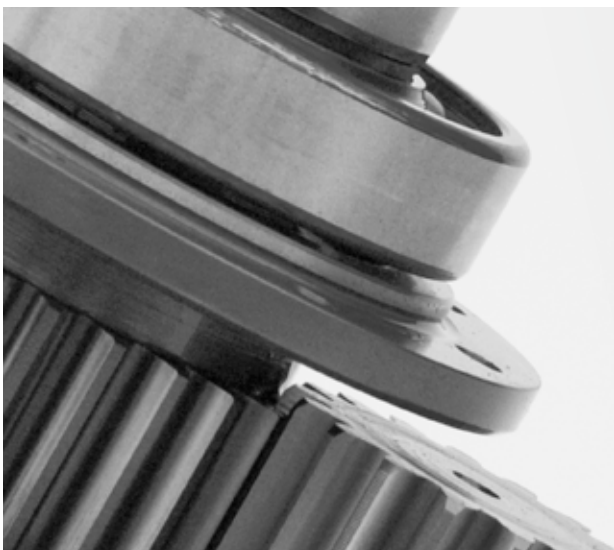
## Product range

### Our products, an overview

| Drum motor type     | TM 100B25  | TM 113B25  | TM 127.25  | TM 138.25  | TM 160.25 | TM 160.30 | TM 215.30 | TM 215.40 |
|---------------------|------------|------------|------------|------------|-----------|-----------|-----------|-----------|
| Drum diameter (mm)  | 100        | 113        | 127        | 138        | 160       | 160       | 215       | 215       |
| Shaft diameter (mm) | 25         | 25         | 25         | 25         | 25        | 30        | 30        | 40        |
| Power (kW)          | 0.05-0.37  | 0.04-0.55  | 0.10-1.1   | 0.10-1.1   | 0.10-0.75 | 0.10-2.2  | 0.10-2.2  | 0.37-5.5  |
| Speed (m/s)         | 0.007-3.60 | 0.008-4.40 | 0.008-2.60 | 0.009-2.80 | 0.13-3.30 | 0.06-4.00 | 0.08-5.30 | 0.12-4.70 |

| Drum motor type     | TM 215B50 | TM 273.40 | TM 315.40 | TM 315.50 | TM 400A50 | TM 400.60 | TM 500A60 | TM 500A75 |
|---------------------|-----------|-----------|-----------|-----------|-----------|-----------|-----------|-----------|
| Drum diameter (mm)  | 215       | 273       | 315       | 315       | 400       | 400       | 500       | 500       |
| Shaft diameter (mm) | 50        | 40        | 40        | 50        | 50        | 60        | 60        | 75        |
| Power (kW)          | 1.5-4.0   | 0.37-5.5  | 0.37-5.5  | 1.1-11    | 1.1-11    | 1.5-22    | 1.5-22    | 11-30     |
| Speed (m/s)         | 0.18-0.31 | 0.17-5.00 | 0.18-5.20 | 0.16-4.40 | 0.20-4.80 | 0.20-4.60 | 0.25-4.70 | 0.80-3.20 |

| Drum motor type     | TM 620A75 | TM 630A100 | TM 800A100 | TM 800A130 |  |  |  |  |
|---------------------|-----------|------------|------------|------------|--|--|--|--|
| Drum diameter (mm)  | 620       | 630        | 800        | 800        |  |  |  |  |
| Shaft diameter (mm) | 75        | 100        | 100        | 130        |  |  |  |  |
| Power (kW)          | 11-30     | 22-55      | 22-55      | 55-132     |  |  |  |  |
| Speed (m/s)         | 1.00-3.90 | 1.00-4.00  | 1.25-5.10  | 1.60-4.50  |  |  |  |  |



#### Design benefits

- Robust, industrial design
- Fully enclosed
- Oil filled
- Well-sized gears and bearings

#### Installation advantages

- Easy to install
- Compact and reliable
- Easy to clean
- Virtually maintenance free
- Low Life Cycle Costs





# Van der Graaf

## Power Transmission Equipment

### Contact us

#### Netherlands

Van der Graaf B.V.  
De Weijert 14  
P.O. Box 3  
8325 ZG Vollenhove  
Tel: 00 31 527 241441  
Fax: 00 31 527 241488  
E-mail: [info@vandergraafpte.nl](mailto:info@vandergraafpte.nl)  
[www.vandergraafpte.nl](http://www.vandergraafpte.nl)



#### Canada

Van der Graaf Inc.  
2 Van der Graaf Court  
Brampton  
Ontario L6T 5R6  
Tel: 00 1 905 793 8100  
Fax: 00 1 905 793 812  
E-mail: [info@vandergraaf.com](mailto:info@vandergraaf.com)  
[www.vandergraaf.com](http://www.vandergraaf.com)



#### Great Britain

Van der Graaf U.K. Ltd.  
Unit 23, The Metro Centre  
Welbeck Way Woodston  
Peterborough PE2 7UH  
Tel: 00 44 1733 391777  
Fax: 00 44 1733 391044  
E-mail: [sales@vandergraaf.co.uk](mailto:sales@vandergraaf.co.uk)  
[www.drummy.com](http://www.drummy.com)



#### USA

Van der Graaf Corp.  
51515 Celeste  
Shelby Township  
48315 Michigan  
Tel: 00 1 866 595 3292  
Fax: 00 1 888 326 0089



#### Germany

Van der Graaf GmbH  
Rheiner Straße 24 B  
48432 Rheine-Mesum  
Tel: 00 49 5975 306210  
Fax: 00 49 5975 3062120  
E-mail: [info@vandergraaf.de](mailto:info@vandergraaf.de)  
[www.vandergraaf.de](http://www.vandergraaf.de)



#### Sweden

Van der Graaf Scandinavia AB  
Spingatan 2  
267 73 Billesholm  
Tel: 00 46 42 22 0802  
Fax: 00 46 42 22 0803  
E-mail: [info@vandergraaf.se](mailto:info@vandergraaf.se)  
[www.vandergraaf.se](http://www.vandergraaf.se)



#### Finland

Van der Graaf Scandinavia AB  
Tel: 00 358 400 419063  
E-mail: [info@vandergraaf.fi](mailto:info@vandergraaf.fi)  
[www.vandergraaf.fi](http://www.vandergraaf.fi)

# BRUYNNOOGHE

transportbanden



**Bruynooghe nv**  
Hillemolenstraat 1  
B-8830 Hooglede  
+32 (0) 51 70 35 35  
[info@bruynooghe-nv.be](mailto:info@bruynooghe-nv.be)

[www.bruynooghe-nv.be](http://www.bruynooghe-nv.be)